

- 2) Delrin slide
- 2) JJ08 lock buttons
- 2) Cranks with stainless washers
- 4) 6x35mm countersink screws with special washers
- 1) Template / Stiffener Plate (aluminum)
- 1) Small Tube silicon

Jesse Luggage Slide Lock Plate

Install guide

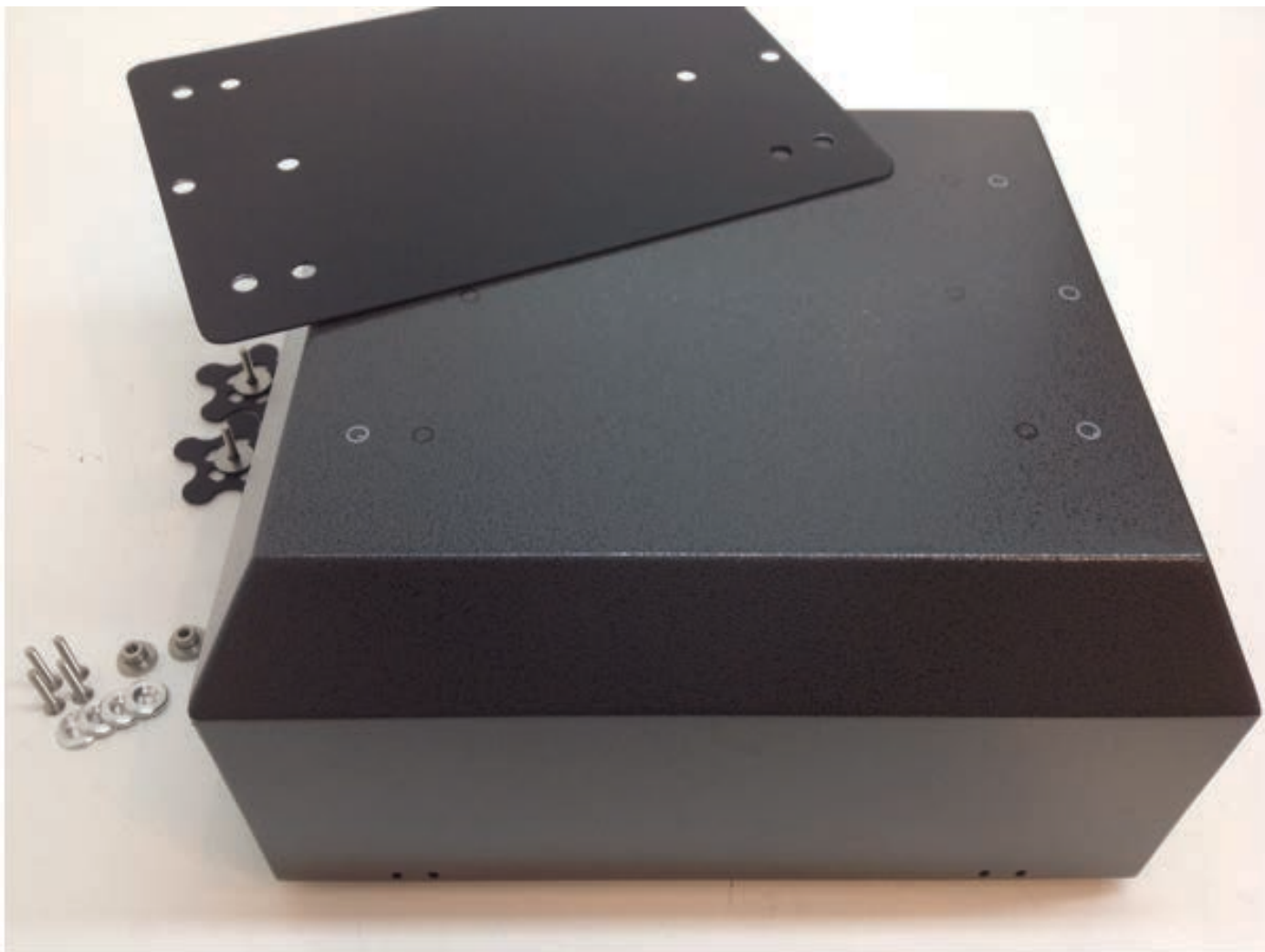




 RED Pattern is used for mounting a top box to a 15" wide "Slide Lock Plate"

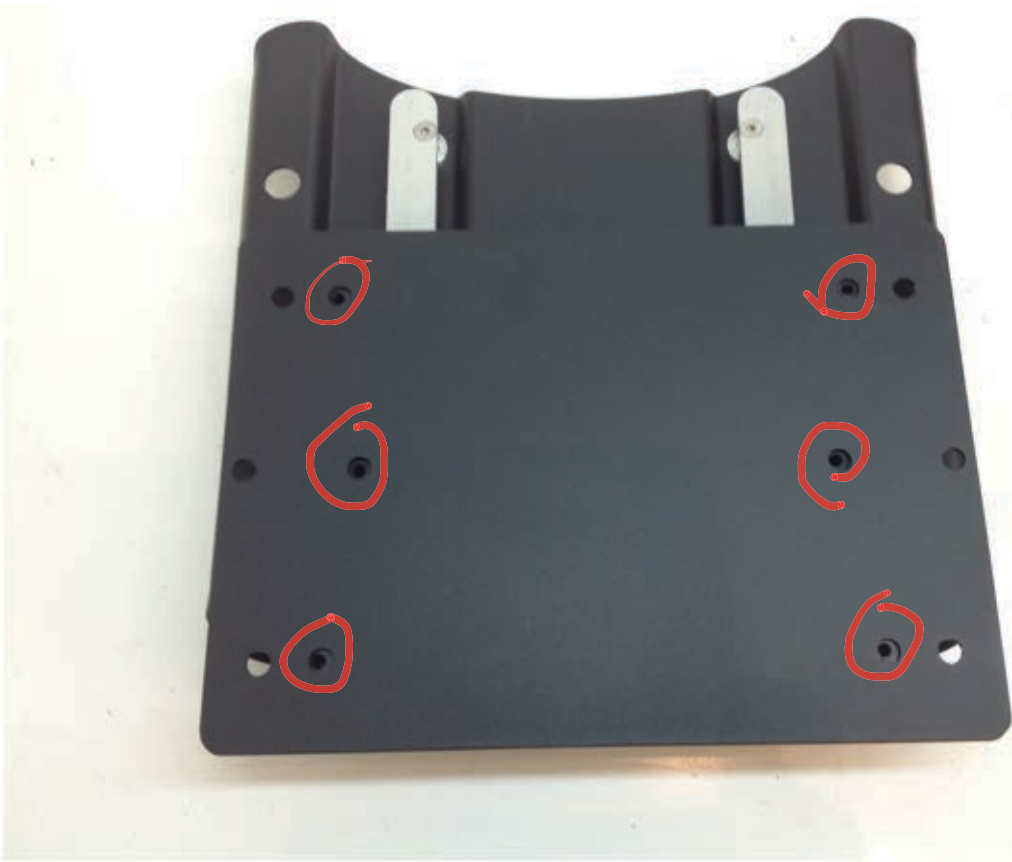
 GREEN Pattern is used when mounting a top box to a 20" wide "Slide Lock Plate"

The pattern plate is also used as a stiffener plate and is put between the bottom of the top box and the slide lock delrin



Use the template, that is also used as a stiffener plate when installed between the bottom of the top box and the delrin slides to mark the holes needed.
(Inside pattern is for smaller plates #S-1514-10 and #LC-1519-15)
(Outside pattern is used for the plates #SW-2013-10 and #658-2019-15)





The pattern on the left is used for the 15" Plate



Install a little silicone on the plate



The stiffener plate will then be mounted between the Delrin and bottom of the top box for extra strength.



The cranks with large stainless washers are installed from the inside.
The stiffener plate is installed on the bottom of the box between the delrin sliders.



Install silicon in a pattern you like and install on the bottom of the top box.

***** Adjustment of the delrin to the Slide Rail MUST be done within 5 min*****



You may have 2) 6x30 stainless steel bolts in your package to use instead of the Cranks
New ones will be sent to you shortly.