



# F650 Single Odyssey Luggage Installation Guide

Thank you for purchasing Jesse Luggage for your Motorcycle. Our Luggage, handcrafted in the USA, is designed for those with an interest in finding the most durable and functional luggage for their adventure touring. Al Jesse has been designing and building aluminum touring luggage since 1991. He has traveled to over 40 countries on his own motorcycle and knows what it takes to make a good set of luggage. Jesse Luggage has built in several unusual features, including hinged lids that not only hold stuff while you are unloading, but also serve as additional packing space. The angles provide extra strength as well as clearance in corners and for your heels when paddling in deep sand. Powder coating provides a durable finished look for your boxes. We hope you enjoy your luggage for years to come.

## Tools Required

Here is a list of tools for the installation:



**Screwdriver:** Small Flat Blade

**Allen:** 4mm, 6mm, 3/32" (provided)

**Torx:** T-45

**Wrenches:** 13mm

Xplorermoto  
520-743-0638

[info@xplorermoto.com](mailto:info@xplorermoto.com)  
[www.xplorermoto.com](http://www.xplorermoto.com)

Instructions Created by JVB Productions 2010 ©

[www.jimvonbaden.com](http://www.jimvonbaden.com)

**General Instructions:**

Do not tighten any bolt until the entire assembly is completed. Leave all bolts completely loose until every component is in place loosely.

Once the components have been installed, tighten all bolts snugly starting from the front and working back. Note where there are gaps in the assembly, and add spacers as necessary.

After the whole system has been snugly bolted down, and any adjustments made, remove one bolt at a time and use blue Loc-Tite ©, two drops per bolt, and fully tighten each bolt. Note; do not apply Loc-Tite © to any nut which is a self-locking nut.

**Note: The hardware for most parts is wrapped in place where it belongs, and in the order it needs to be installed. DO NOT remove the wrap until ready to install that particular piece. This helps keep track of what bolts go with what part.**



Make sure all components are included with your kit. Most hardware is attached to the proper components.

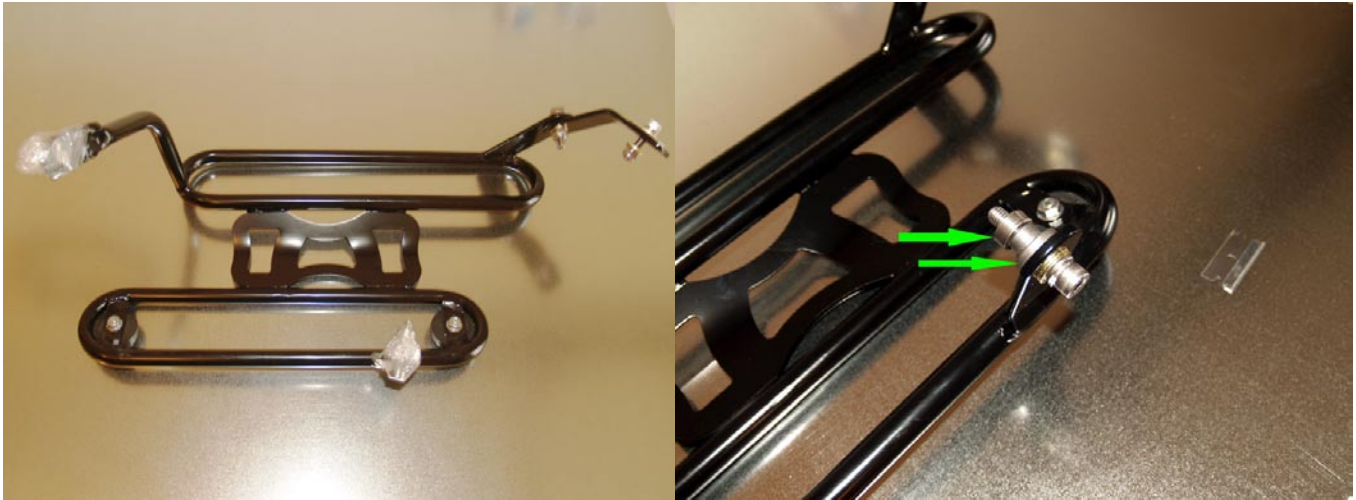
Xplorermoto  
520-743-0638

[info@xplorermoto.com](mailto:info@xplorermoto.com)  
[www.xplorermoto.com](http://www.xplorermoto.com)

Instructions Created by JVB Productions 2010 ©

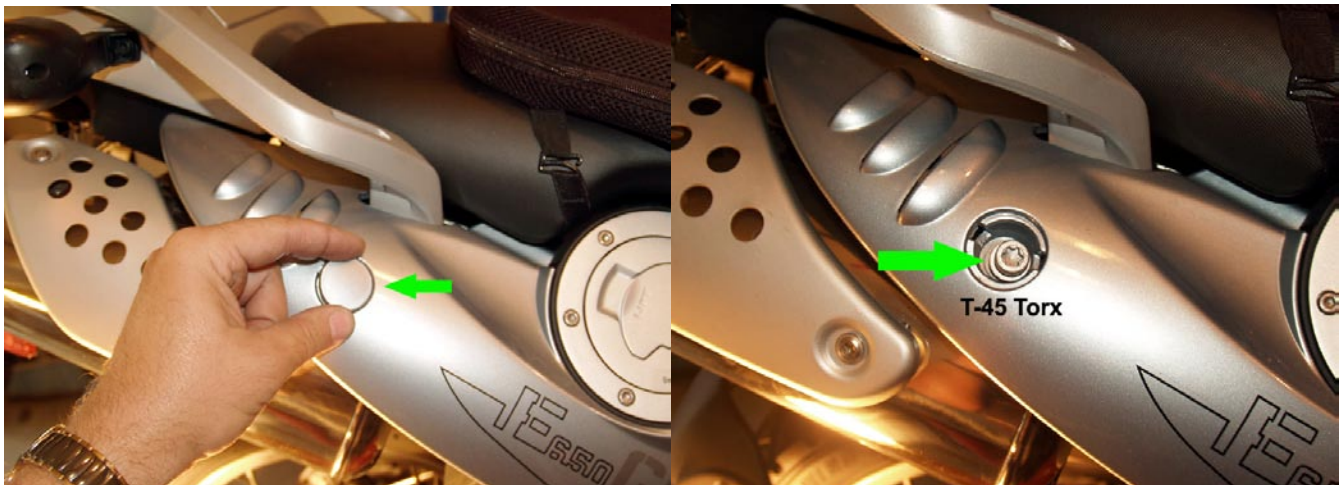
[www.jimvonbaden.com](http://www.jimvonbaden.com)

## Step 1: Install Side Case Brackets



Remove the plastic wrap (left) and keep the spacers as shown (right). Also remove all additional hardware, keeping in mind it's original location and spacers included.

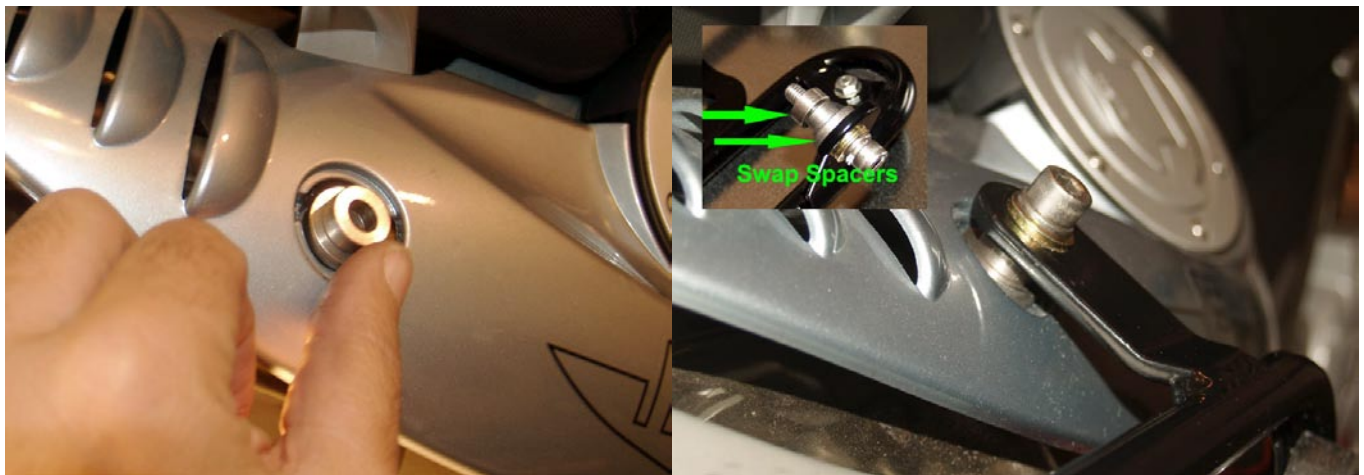
**Note: The two spacers in the above right photo are reversed for installation (arrows).**



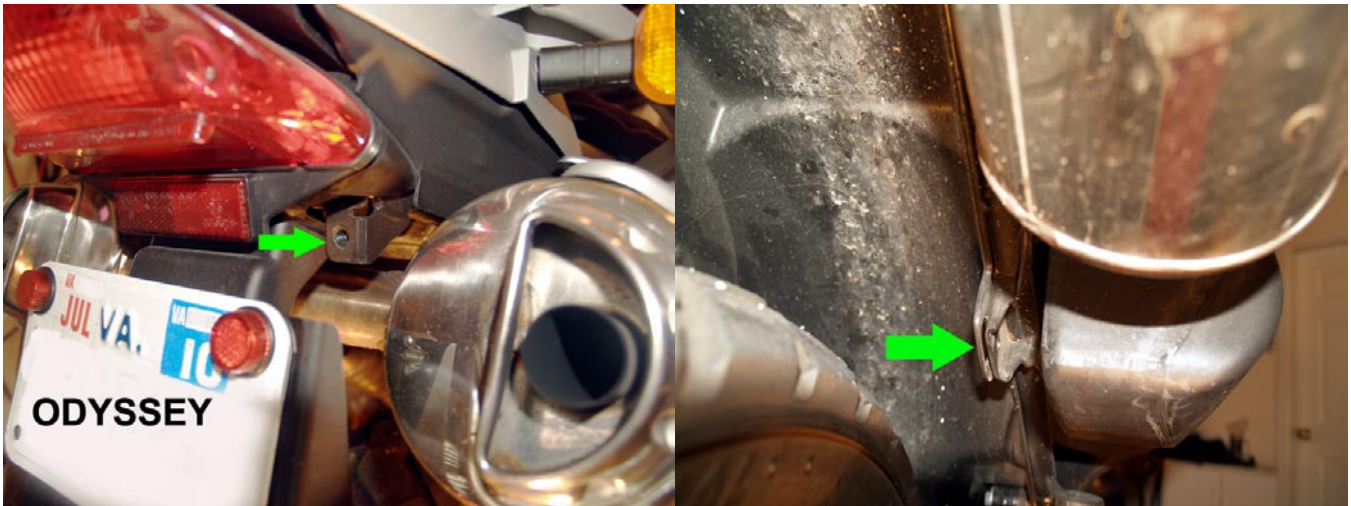
Use a small flat screwdriver to pry the bolt cover off (left photo), Then use a T-45 Torx to remove the bolt.



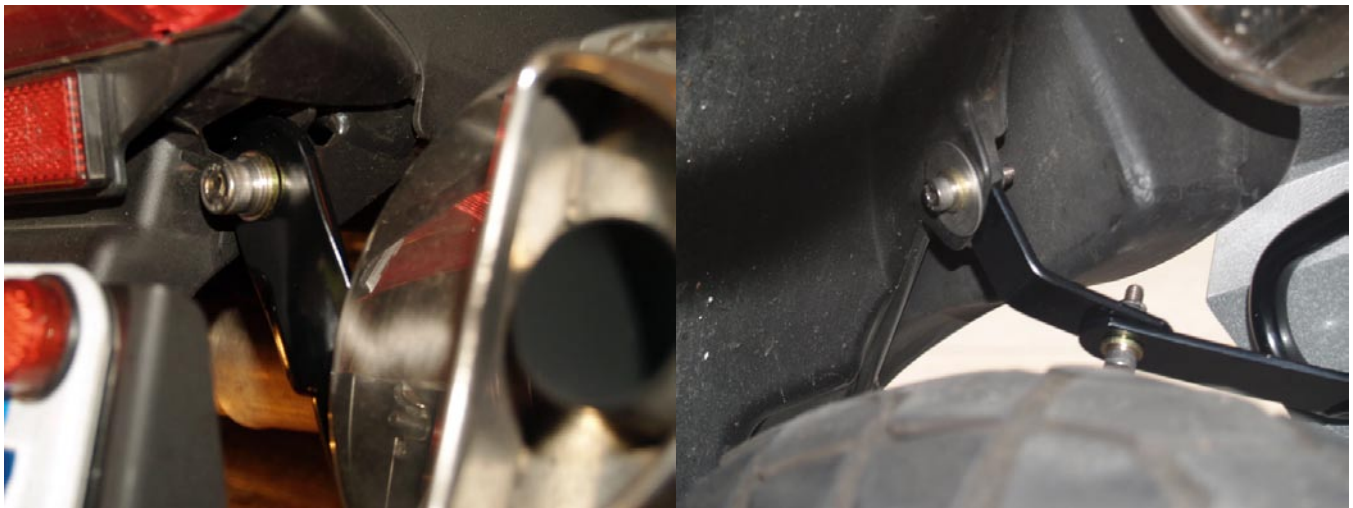
Install the right bracket as shown. Bolt the bracket up as shown, in the order shown.



Stack the spacers as shown in the left photo. Use the top bolt (#1 in the top photo) to hold the bracket in place while installing the other two bolts. The Allen bolts are 6mm, and the nut is 13mm.

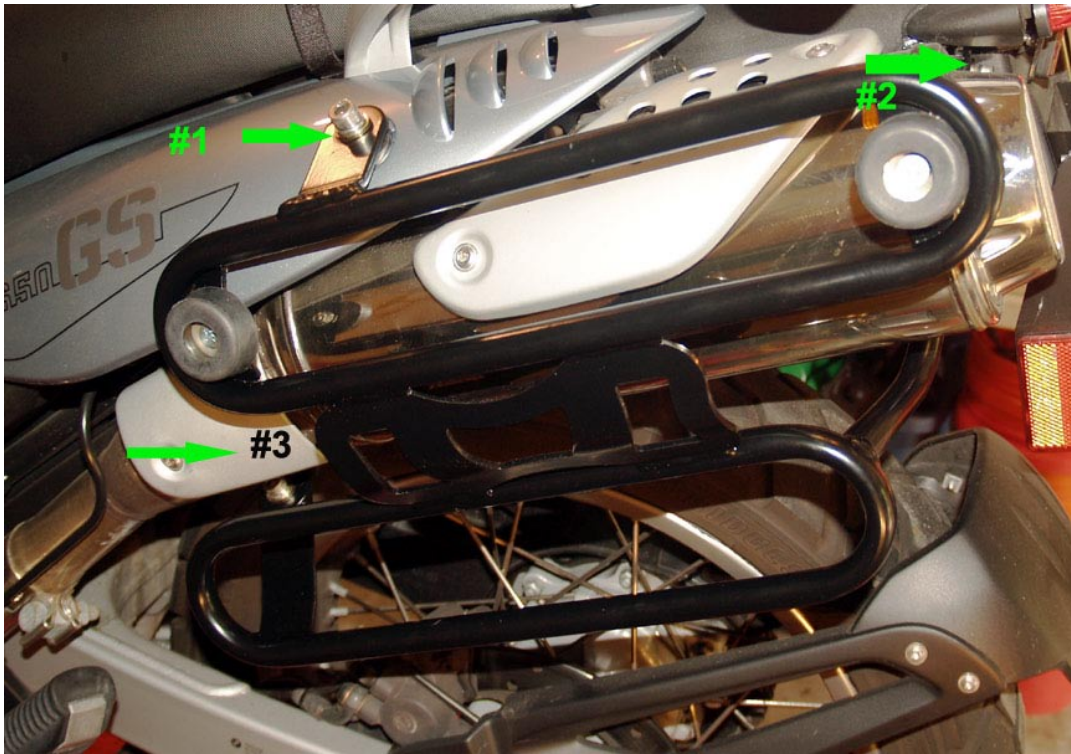


The rear bolt has a threaded captured nut, and the front sandwiches the body bracket and the inner fender with a 6mm Allen, small washer, large fender washer, inner fender, body plastic, smaller washer and 13mm nut.

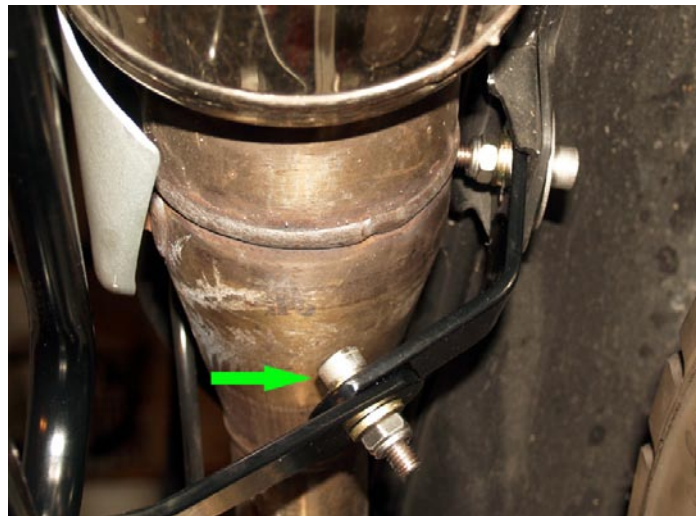


Shown with the bolts and nuts in place, 6mm Allens, and a 13mm nut. Note the position of the washers, just as they came off the bracket.

Keep all the bolts loose until you have the brackets bolted in place.



Install the left bracket the same way as the left bracket. See the arrows for the attaching points.



On the left bracket, make sure you have the middle bolt in the lower front bracket oriented as shown with the bolt on top and the nut on the bottom.

Now that both side brackets are loosely installed, it is time to go back and tighten them down. Once all the brackets fit snugly with the bolts and nuts lightly tightened down, go back and add two drops of blue Loc-Tite® and properly tighten them down. Do NOT place Loc-Tite® on any locking nut.

Xplorermoto  
520-743-0638

[info@xplorermoto.com](mailto:info@xplorermoto.com)  
[www.xplorermoto.com](http://www.xplorermoto.com)

Instructions Created by JVB Productions 2010 ©

[www.jimvonbaden.com](http://www.jimvonbaden.com)

## Step 2: Preparing the mounts on the Odyssey Bags

### Tools Needed:

3/16" Allen (supplied), 4mm Allen.



Above are the tools for this section of the installation, A 4mm Allen, and a 3/16" Allen (supplied).



Unpack the bag with the case installation parts. There will be two sets.

Xplorermoto  
520-743-0638

[info@xplorermoto.com](mailto:info@xplorermoto.com)  
[www.xplorermoto.com](http://www.xplorermoto.com)

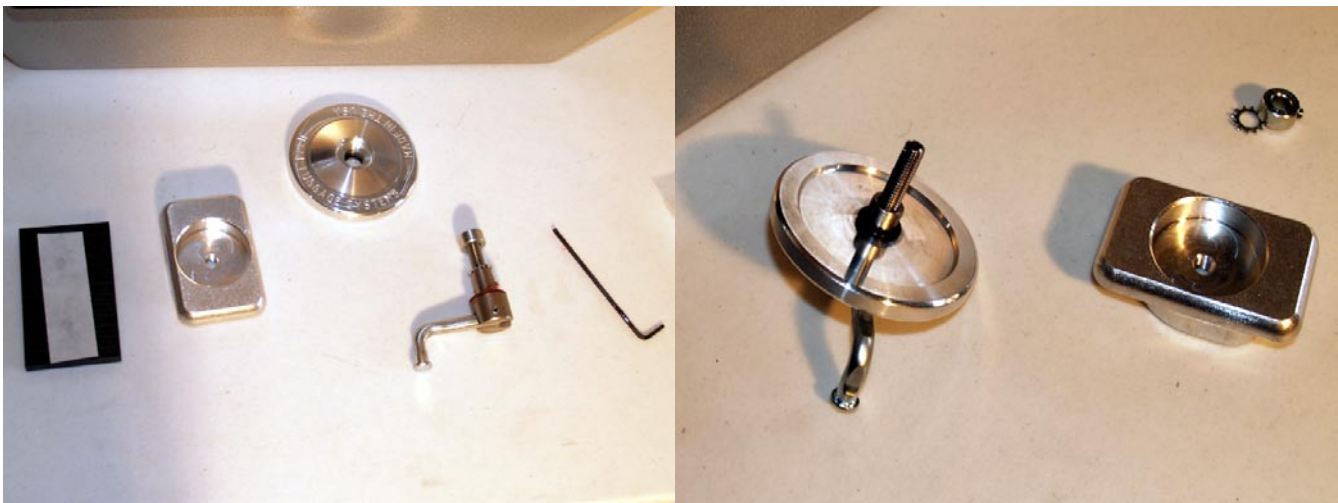
Instructions Created by JVB Productions 2010 ©

[www.jimvonbaden.com](http://www.jimvonbaden.com)



Install the long bolts (4) (above with red arrows) with a lock washer (split washer) then a large flat washer and through the bag into the metal plate and threaded composite block (right). Keep these loose for now.

**NOTE: The Odyssey luggage for the F650 Single does not use a stiffening plate, or the outer two bolts shown with green arrows, and to the right and left of the block on the right photo above. This photo was for illustration only.**



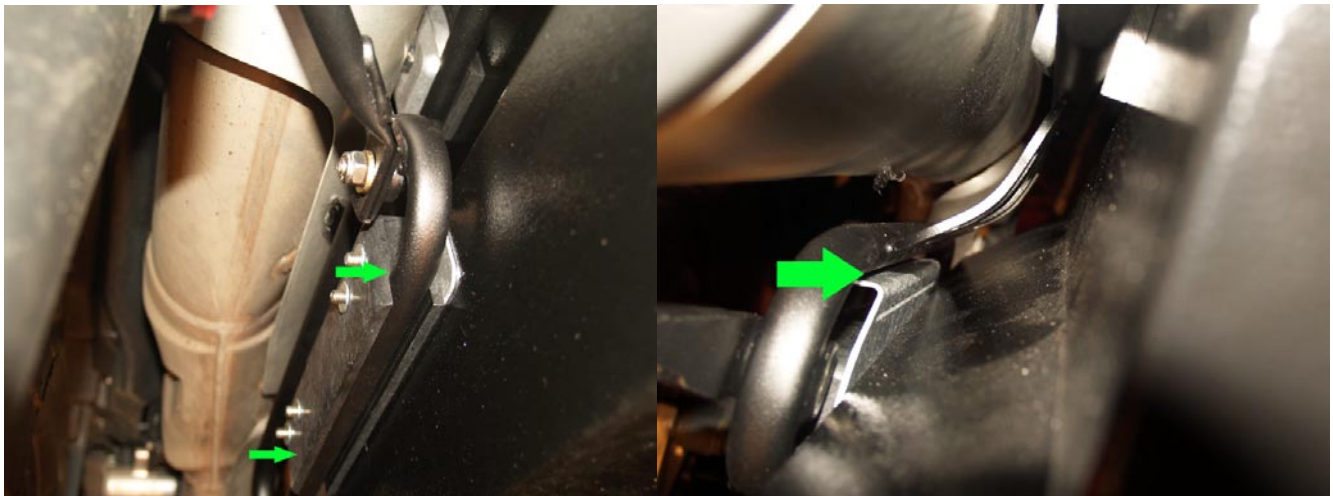
Assemble the cam locking mechanism. Using the parts in the left photo, remove the collar with the supplied Allen wrench, peel off the “O” ring under the tape on the round assembly and fit the crank handle through the hole. Use the rubber “O” ring to fit over the shaft.



Peel off the protective covers on the composite block tape strips, place over the hole in the bag as shown. Push the crank handle shaft through the hole and thread on the cam. Add the supplied washer next. Use the supplied Allen to tighten the setscrew. Repeat on the other side bag. Keep the lower mounting plates loose for now.

### **Step 3: Installing and adjusting the Odyssey Bags**

Starting with your left Odyssey Bag, hold it at a slight angle and insert the lower composite block on the center of the lower mounting plate. Rotate the bag up until it is flat against the mount. See photo below.



Use the crank handle to rotate the mount cam until it covers the upper mounting bracket on the bike. Until you have it properly adjusted, it may need to be turned by hand on the mounting cam. Do not tighten it yet. Push the metal plate up against the upper portion of the mounting bracket (see above right).

Angle the bag by grasping it end to end and make sure it is level with the angle of the bike to your satisfaction.

Xplorermoto  
520-743-0638

[info@xplorermoto.com](mailto:info@xplorermoto.com)  
[www.xplorermoto.com](http://www.xplorermoto.com)

Instructions Created by JVB Productions 2010 ©

[www.jimvonbaden.com](http://www.jimvonbaden.com)

**Note: It helps if both bags are mounted so you can compare them to make them level with each other.**



Make sure the lower composite block is fully seated on the lower mounting bracket. See arrows.

Tighten the bolts holding the composite block and metal bracket from the inside of the box.

#### **Step 4: Aligning the Odyssey Bags**

If properly installed, the Odyssey Cases should line up to each other. If one side is high or low, you can adjust them by loosening the bolts on the lower composite mounts installed ON the bags, and moving it slightly as described in Step 3 above. Make sure the crank handle is loose while doing this.



The top edges of the bag should align with each other, as in the photo above.

Ensure that both sides are level and double check everything is tight.

Xplorermoto  
520-743-0638

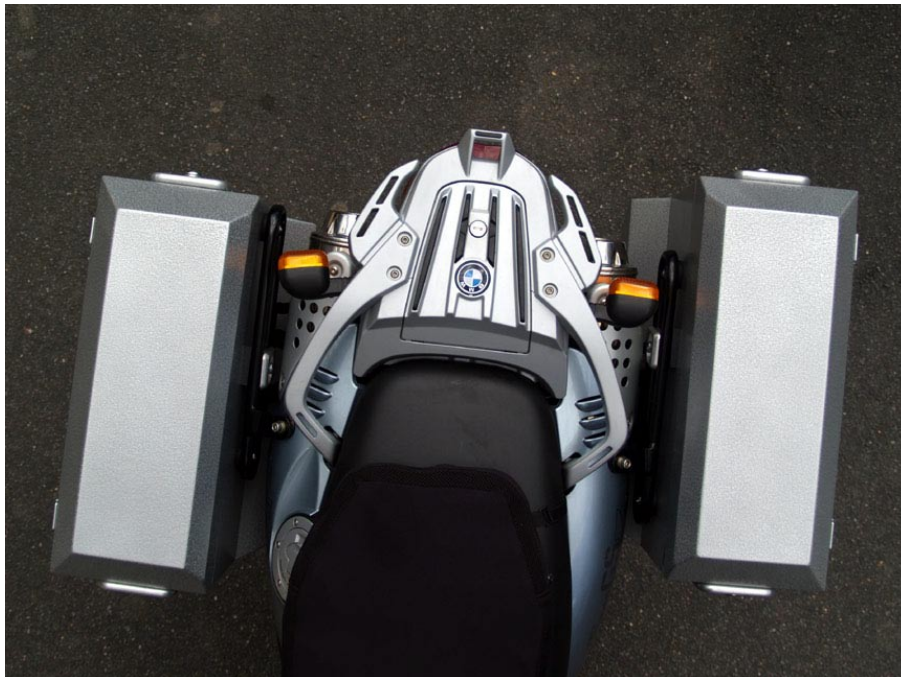
[info@xplorermoto.com](mailto:info@xplorermoto.com)  
[www.xplorermoto.com](http://www.xplorermoto.com)

Instructions Created by JVB Productions 2010 ©

[www.jimvonbaden.com](http://www.jimvonbaden.com)



Remember, these bags are designed to be moved on the mounts. They will move as much as 2.5 inches fore and aft. Depending on your needs, you can adjust them to suit. They will need to be completely removed and repositioned for this adjustment.



This photo shows the range of adjustment, in this case just about 2.5 inches.

Xplorermoto  
520-743-0638

[info@xplorermoto.com](mailto:info@xplorermoto.com)  
[www.xplorermoto.com](http://www.xplorermoto.com)

Instructions Created by JVB Productions 2010 ©

[www.jimvonbaden.com](http://www.jimvonbaden.com)

## **Step 5: Go for a Ride**

Once you have completed the installation of your new Odyssey Cases, put all your tools away; grab a beer, a map, and start making plans for your next trip, because you and your Jesse Luggage are really going places.

If you encounter any issues, please contact Xplorermoto at the e-mail and phone number listed below.

Xplorermoto  
520-743-0638

[info@xplorermoto.com](mailto:info@xplorermoto.com)  
[www.xplorermoto.com](http://www.xplorermoto.com)

Instructions Created by JVB Productions 2010 ©

[www.jimvonbaden.com](http://www.jimvonbaden.com)